

EMERGING ARTISTS
THEATRE



NEW WORK
SERIES

FALL 2019



**EMERGING ARTISTS
THEATRE**

presents the

NEW WORK SERIES

EMERGING ARTISTS THEATRE's mission is to be an incubator for new voices from the page to the stage.

This fall, Emerging Artists returns with their one-of-a-kind festival. Visit the theater any evening during this three-week event and you'll find yourself transported in a number of surprising ways: by a single performer embodying a whole host of characters; by a more experimental theater piece "done differently" that challenges and delights; by a cozy two-person show exploring relationships; or perhaps by a bouncy new musical that will have you humming.

Emerging Artists has always been about new works, new talents, new voices. That's never been more evident than now. And you, the audience, are the vital ingredient to making this a success for these artists. Your participation in the unique talkback with the artists provides the insight they need to move their work forward.

In the past 26 years, Emerging Artists has premiered over 1,400 new works and also garnered a Drama Desk Nomination, received the American Theatre Wing Grant Award for Consistent Commitment to Excellence in Theatre, and named Best Off-Off Broadway Theatre Company in NYC for Actors to Work With by Backstage Magazine. In the last five years alone, Emerging Artists has provided opportunities for over 3,500 diverse artists to see their work developed and premiered at no cost to the artists to submit or participate.

TICKETS \$10 – \$20

(800)838-3006 | NEWWORKSERIES.COM

**CURATORS
FOR NEW
WORK SERIES**

Paul Adams
Andrea Alton
Vanessa Shealy
Scott Klavan

TADA

15 West 28th Street,
2nd Floor

Between
Broadway & 5th Avenue
New York, NY 10001

THE NEW WORK SERIES

gives artists a rare opportunity to present their work-in-progress before an audience, afterwards engaging in a meaningful talkback session with audience, director, cast, and curator.

The resulting insights are invaluable to the process, providing the playwright with the tools necessary to take the work to the next level.

OCTOBER 2019

NEW WORK SERIES

SUNDAY

MONDAY

TUESDAY

<p>6</p> <p><u>2Pm</u> HIDE AND SEEK</p> <p><u>5Pm</u> Urban Dwellers</p> <p><u>7Pm</u> A Love Story (With Supernatural Roadblocks)</p> <p><u>9Pm</u> Paradox in Translation</p> <p><u>9Pm</u> Furrow</p>	<p>7</p> <p><u>7Pm</u> Apple, Table, Penny</p> <p><u>9Pm</u> SODOMY RULES! The Bowers v. Hardwick Trial</p>	<p>8</p> <p><u>7Pm</u> Look In My Eyes</p> <p><u>9Pm</u> Pablo's Kisses</p>
<p>13</p> <p><u>2Pm</u> Apple, Table, Penny</p> <p><u>5Pm</u> CensorSh**</p> <p><u>5Pm</u> In A Lonely Place</p> <p><u>5Pm</u> The Awards go to</p> <p><u>7Pm</u> Balances</p> <p><u>9Pm</u> Robert Will Show You the Door</p>	<p>14</p> <p><u>7Pm</u> The Rewrite</p> <p><u>7Pm</u> Wander Woman</p> <p><u>9Pm</u> The Rebound</p>	<p>15</p> <p><u>7Pm</u> The Dispatchment Society</p> <p><u>7Pm</u> Use Your Words!</p> <p><u>9Pm</u> Don't Say I'm Not Real</p>
<p>20</p> <p><u>2Pm</u> Madame Curie the Musical</p> <p><u>5Pm</u> Freeze Response</p> <p><u>7Pm</u> Ban</p> <p><u>7Pm</u> Grand Prix du Festival</p> <p><u>7Pm</u> Perception</p> <p><u>7Pm</u> SHAPESHIFTER</p>	<p>21</p> <p><u>9Pm</u> Fugue</p> <p><u>9Pm</u> Habitual Longing</p> <p><u>9Pm</u> "Kitsch-In" by Sweetie Pie...</p>	<p>22</p>

WEDNESDAY**THURSDAY****FRIDAY****SATURDAY****2**7Pm Memory Tracers7Pm Those People...7Pm timus and a periwinkle dream9Pm The Curious Contents of Christie's Wastebasket**3**7Pm Apple, Table, Penny9Pm Anything Helps9Pm The Wall**4**7Pm Apple, Table, Penny9Pm Allemande Left9Pm I Hate Myself and Want to Die?9Pm in the quiet of the wood**5**7Pm Apple, Table, Penny9Pm

Untransmittable: Disclosure in a Tinder Age

97Pm Anonymous Visibility7Pm Moon: A One Wo(Man) Show9Pm A Sea Full of Stars**10**7Pm Albee Damned9Pm Jailbird**11**7Pm High Exposure7Pm Letters For Marie7Pm Moon Map9Pm in lungs**12**7Pm Apple, Table, Penny9Pm PICKING UP: A New Musical**16**7Pm La Caravana de los Misterios7Pm THE BLOCKERS9Pm Model Citizens**17**7Pm THE CLUB9Pm The Poet's Play**18**7Pm AFTER ALL...9Pm Darkened City**19**7Pm Sentimental Journey7Pm Wavelength9Pm

SCANDUSICAL



APPLE, TABLE, PENNY

A New Play by **Peter Levine**

OCTOBER 3RD – 13TH

Apple, Table, Penny

Written by Peter Levine

Directed by Jennifer Tuttle

Performed by Abraham McNeil Adams, Jerry Ferris, Peter Levine,
Leslie Lynn Meeker, Vivian Meisner, Laura Sametz & Paula Shtein

Max Gelman, a frustrated Borscht Belt comedian, often neglected his roles as husband and father to follow his dream. But now something's wrong. He's been acting strangely and his wife and children are concerned. So is he.

Complete with jokes, the occasional song, and a cast of characters that includes Carmen Miranda and Jackie Gleason, *Apple, Table, Penny* is about coming to terms with infidelity, the special love between a grandfather and his granddaughter, and the inevitable that awaits us all.

THU, OCT 3,	7PM
FRI, OCT 4,	7PM
SAT, OCT 5,	7PM
MON, OCT 7,	7PM
SAT, OCT 12,	7PM
SUN, OCT 13,	2PM

WED, OCT 2, 7PM

MEMORY TRACERS

Written by Stuart Green
Directed by Noelle P. Wilson

While attending her Grandmother's funeral, Christine bonds with her Great Aunt Belle over past memories...while facing the uncertainty of future ones.



WED, OCT 2, 7PM

Those People...

Written & Directed by Barbara Bellman
Performed by Tim Jerome & Matthew Bauman

As a Holocaust survivor, Sam has seen all kinds of bigotry, except his own.

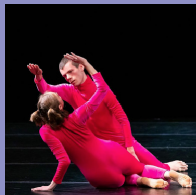


WED, OCT 2, 7PM

timus and a periwinkle dream

Choreographed & Performed by Tim Bendernagel & Chloe London

We are currently working on a duet that accentuates our habitual quirks and bodily similarities. This dance is also a negotiation of what we view as absurd as well as visually and physically satisfying for us as makers.

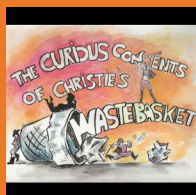


WED, OCT 2, 9PM

The Curious Contents of Christie's Wastebasket

Book and Lyrics by Janine Robledo
Music by Aden Kent Ramsey
Directed by Eric Mark Olson-Sánchez Padilla
Music Direction by Sujin Kim-Ramsey

In this quirky musical comedy, Christie can't seem to decide on anything...what to eat, who to date, where to live, or how to finish her short stories. Things are about to change when certain disgruntled characters from her discarded stories pop into her apartment in the middle of the night and demand that she give them proper endings.



PLAY

MUSICAL

SOLO SHOW

DANCE

TICKETS \$10 - \$20 | (800)838-3006 | NEWWORKSERIES.COM

THU, OCT 3, 9PM

Anything Helps

Written by Mark Lanham
Directed by Chris Clavelli
Performed by Mark Lanham

Documenting a real-life experience, *Anything Helps* starts with one man's decision to reject passivity about the 70,000 homeless people in New York City. A simple choice—buying a big pump-top thermos and serving coffee one-on-one to Union Square's homeless—puts him on a path that explores the true nature of charity—why we give, and why we often hold back. This transforming experience shows the power kindled when you say “yes” to the call of service, and a surprising paradox of the rich experience that results from eye-level contact with the poor.



THU, OCT 3, 9PM

The Wall

Written & Directed by Greg Bergman
Performed by Greg Bergman, Nick Ambrose, Danielle MacInnis & Rob Romero

A darkly funny satire on immigration, automation, and the future of work in America.



FRI, OCT 4, 9PM

Allemande Left

Directed by Emily Kessler
Music by Eric Shekerjian
Costumes by Toya Dubin
Performed by Sienna Blaw, Emily Kessler, Xin Yi Pang,
Madeline Robertson & Kathryn Taylor

Allemande Left is an exploration of Sol Lewitt's early wall drawings as translated to a dancscape. The work is primarily inspired by the contents and instructions of “Wall Drawing #146”, where five types of lines are arranged sequentially on one another, splayed into grand space. Five dancers embody the five forms of lines in flux. They experiment with abstract combinations moving both into and away from communal ritualized form. A rumination and extrapolation of a methodical structure, *Allemande Left* takes five dancers through a maze of their own making.



PLAY

MUSICAL

SOLO SHOW

DANCE

TICKETS \$10 - \$20 | (800)838-3006 | NEWWORKSERIES.COM

FRI, OCT 4, 9PM

I Hate Myself and Want to Die?

Written by Lizzie Guest

Directed by Marissa Bay Riggs

Performed by Lizzie Guest & Jake Roberson

April 8, 1994. Bismarck, North Dakota. Eva ends up on her local Blockbuster's roof the night Kurt Cobain's body was found in an apparent suicide. Why? She intends to follow in her idol's footsteps. Enter Dave, the Blockbuster shift manager who ruins all her plans.



FRI, OCT 4, 9PM

in the quiet of the wood

Concept & Choreography by Javier Padilla & The Movement Playground

the wood is a place to congregate. Where dreams and nightmares mingle and memories play hide and seek. *in the quiet of the wood* explores the deja vu's, the familiar faces and the secrets that hide in our dreams.



SAT, OCT 5, 9PM

Untransmittable: Disclosure in a Tinder Age

Written by Amy Fulgham

Directed by Jake Lipman

Performed by Amy Fulgham

Undetectable = Untransmittable! You would think that would make it so much easier to disclose your HIV status, wouldn't it? But when are you supposed to disclose your status if you are having sex within 30 minutes of meeting someone? How can you partake of the smorgasbord of sexual delights on Tinder if you are a 50-year-old woman with HIV?

What is the statute of limitations for being prosecuted for having protected sex? Why is having sex with strangers so hard????



SUN, OCT 6, 2PM

HIDE AND SEEK

Lyrics, Libretto & Composition by Mary Lloyd-Butler

HIDE AND SEEK is a poignant coming of age story set to a dramatically lush score. Jenny, the youngest child in a fractured family, believes it is her job to hide and hold the family secrets. The competing demands of her mother's worsening alcoholism and her own desire for a separate life compel Jenny to make a difficult choice.



SUN, OCT 6, 5PM

Urban Dwellers

Written & Directed by Brad Forenza
Produced by Brian Dashew & Brad Forenza

A bench in Central Park, a subway car on the 1 Train, stadium seats at the Subway Series, an Off-Broadway diner, an apartment on the Upper West Side, and an apothecary shop in Chinatown... *Urban Dwellers* is a collection of short plays about the city we love, the people who call it home, and the connections between and among us all.



SUN, OCT 6, 7PM

A Love Story (With Supernatural Roadblocks)

Libretto, Composed & Lyrics by Nina Osso
Directed by Reanna Valencia

A Love Story (With Supernatural Roadblocks) takes place in two worlds: Earth and the Cupidverse, primarily at the office of Cupidity LLC, a supernatural matchmaking firm. Plumeria, Cupidity LLC's smart but conceited head cupid, has been entrusted with a case that will decide the future of the firm: the case of Bree and Kevin, two teenaged best friends on Earth. But her world is rattled when new employee Marley leads her to question everything she knows about herself. *A Love Story* examines the human (and cupid!) ego with camp, charm, and a whole lot of heart.



SUN, OCT 6, 9PM

Paradox in Translation

Choreographed by Charly Santagado
Music by Emory Campbell, Steve Reich & Charly Santagado
Written by Matthew Menchaca & Charly Santagado
Danced by Emory Campbell, Frances Fuller, Nicole Gallo, Karolina Holmstrom & Charly Santagado

Paradox in Translation is an expansion of my piece, *Translation Studies No. 4 & 5*, in which the individual words of two poems are translated into movement, creating a literal vocabulary that exactly maps to the language used in the poems. This close translation is complemented in *Paradox* by more disjointed, loose translation material that transcends the original linguistic structure and ties the work together in a dreamscape that explores the contradictions inherent in love and loss.



PLAY

MUSICAL

SOLO SHOW

DANCE

TICKETS \$10 - \$20 | (800)838-3006 | NEWWORKSERIES.COM

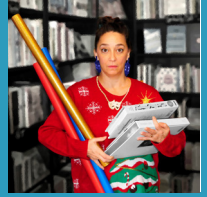
SUN, OCT 6, 9PM

Furrow

Written & Directed by Derek Davidson
Performed by Karen Sabo

Sarah is no stranger to strangers. Anyone in retail--especially during the holidays--can talk about their odd customers. Besides, when she's not selling books, she's performing with the local community theatre, where unusual characters abound. So strangers are no problem until now, when the strangest stranger in Sarah's life is...her father.

Weaving together the biblical injunction to welcome strangers with Scrooge's journey of opening his heart to others, the show is an allegory for our current discussion regarding welcoming or rejecting immigrants to the U.S., and of overcoming fears of differences to create a more connected society.



MON, OCT 7, 9PM

SODOMY RULES! The Bowers v. Hardwick Trial

Written & Performed by Bill Crouch
Directed by Brian Keane

Sodomy Rules! The Bowers v. Hardwick Trial is a solo-performance play based on the events of the infamous Supreme Court trial which denied privacy rights to the LGBTQ community in 1986. Michael Hardwick, an openly gay man and his partner were arrested in the privacy of their home during sexual intimacy. Through compelling eyewitness testimony, the author re-creates the dramatic events surrounding the trial, while revealing his own struggles to make peace with Michael Hardwick's heartbreaking journey. This work seeks to embrace the values we hold in highest regard: "Life, Liberty and the Pursuit of Happiness."



TUE, OCT 8, 7PM

Look In My Eyes

Directed by Perry Dell'Aquila
Written by Eddie Baca
Performed by Idan Raz, Nikhil Verma, Martin Riofrio,
Madeline Reed & Jose Colon

An older gay man develops a loving but secretive relationship with a younger Eukranian muslim man. In walks in 2 FBI agents.



TUE, OCT 8, 9PM

Pablo's Kisses

Written by Paul K. Smith

Directed by Jenna Brady

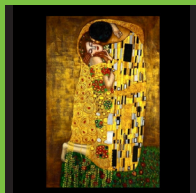
A play about a woman's re-awakening. And breaking free.

A play of suspense; a tale of romance. A time-bending love story.

It's as if Che Guevara arrives at Rockefeller's home to find the billionaire married to his first love:

He comes to kill, and the wife welcomes him.

He's her first love, and she's convinced he's come to woo her away.



WED, OCT 9, 7PM

Anonymous Visibility

Choreographed by Alaina Wilson

Composed by John Yannelli

Anonymous Visibility creates a space where mind and body are detached and released into absurd reality. While enacting a rigorous interplay of dynamic movements, dancers use a directed gaze to generate and sustain connections between each other as well as audience members. This engrossing work shifts between states of vivacity, competition, detachment, and absurdism, while vibrant costumes, cool lighting, and a driving original score bring energy and a sleek intensity to the dance.



WED, OCT 9, 7PM

MOON: A ONE WO(MAN) SHOW

Written & Performed by Amy Larimer

What happens when a man with a strong hairstyle and inquisitive mind, experiences an emotional awakening? Mull Itover waxes poetic as he ponders the nature of now, journaling and dancing his way through the darkness and the light.



WED, OCT 9, 9PM

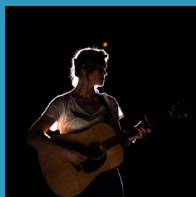
A Sea Full of Stars

Written by April Aguilera

Directed by Karla Knudsen

Performed by April Aguilera & Ava Aguilera

A Sea Full of Stars is a one-woman acoustic musical surrounding an unexpected birth diagnosis of Down Syndrome. Told through monologues and songs, *A Sea Full of Stars* explores the depths of emotion in one mother's journey towards acceptance. A love letter not only to her child but also to herself.



THU, OCT 10, 7PM

Albee Damned

Written & Directed by David James Parr

Albee Damned is a play on plays, featuring comedic shorts inspired by classic works of theater about family dysfunction and marital discord, each given a modern twist. In *Long Gay's Journey Into Night* three siblings en route from the airport to a Thanksgiving dinner stop at a family restaurant where margaritas are consumed and secrets revealed in quick succession. In *Albee Damned*, Game Night goes horribly awry when two couples – one long-term and the other newlyweds – engage in a cutthroat game of Charades fueled by resentments, jealousy and a bottle of Ouzo.



THU, OCT 10, 9PM

Jailbird

Written by Sheldon Shaw

While in a jail cell waiting for a judge, two African American men with different belief systems, one Jewish and the other a non-believer, clash. The Jewish African American is new to the “system,” and the non-believer tries to show him the ropes to jail/prison life in dramatic fashion.



FRI, OCT 11, 7PM

High Exposure

Choreographed & Performed by Madison McGain
Music by Franz Schubert & Elvis Presley (edited by Madison McGain)

High Exposure is a two-part solo using movement as a catalyst to confront certain ideas surrounding women that perpetuate gender inequality. The work is an ongoing, introspective process that creates a space for the artist to re-frame her own misconceptions of herself, thus attempting to reconcile with falsehoods imposed by an oppressive ideology.



PLAY

MUSICAL

SOLO SHOW

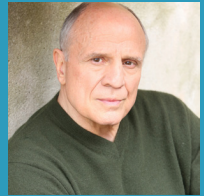
DANCE

TICKETS \$10 – \$20 | (800)838-3006 | NEWWORKSERIES.COM

FRI, OCT 11, 7PM

Letters For Marie

Written by Bruno Iannone
Directed by Marcia Haufrecht
Performed by Bruno Iannone*

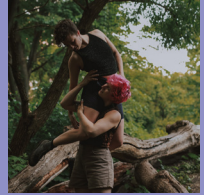


While clearing out his dad's home, Bruno finds letters he had written to his estranged wife, Marie, during her battle with cancer and her untimely death. Letters intended for her which were never sent. *Letters for Marie* is a true story revealing the journey of a man's quest for forgiveness, redemption, and finding love again.

FRI, OCT 11, 7PM

Moon Map

Choreographed & Performed by Emily LaRochelle & Sarazina Joy Stein
Music: "Anglo Ethio Suit" by Mulatu Astatke & The Heliocentrics

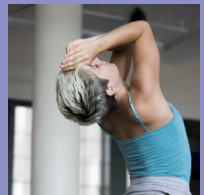


Emla and Sarazina present an excerpt of their piece about the progression of their found connection with one another, organizing and jumbling the physicality of their bond with moments of comic levity. Much of their collaborative process has been inspired by the notion of charming while challenging. In this work, bodies become puzzle pieces as they navigate the world they've created together.

FRI, OCT 11, 9PM

in lungs

Choreography by Dani Cole in collaboration with the dancers
Danced by Anna Pinault, Liana Kleinman, Riley Sullivan, Natalie True
Costumes by Natalie True
Music by Slow Meadow, Humpback Sounds, Hildur Guðnadóttir



in lungs, a performative process and work led by Dani Cole, is an invitation of presence and reflection. *in lungs* trusts that in the pressure of onward pursuits there is distinctive bravery in spaces that ask us to be here, and move backward, without fear of losing pace. The inquiry of *in lungs* originates in the body and in the dense layers of memory that flesh, muscularity, and bones encapsulate. Cole and her interdisciplinary collective, Mobilized Voices/M O B I V, question the resiliency and tangible conjurations of memories in the form of movement creation and dialogue.

SAT, OCT 12, 9PM

PICKING UP: A New Musical

Book & Lyrics by Nathan Christopher

Music & Lyrics by Gregory Douglass

Directed by Giana DeGeiso



It's the 90s – when everyone still relied on the landline telephone. That landline is a lifeline to four women who have been brought together and are anxiously awaiting a phone call. As the hours slip away, tensions run high, friendships are tested and secrets are exposed. *PICKING UP: A New Musical* is a story about relationships, family, and what happens when everything is on the line.

SUN, OCT 13, 5PM

CensorSh**

Choreography & Music by MURDERDANCE

Performed by Zakk Venedoe & Emily Wolfe



*CensorSh*** is a slap in the face to common decency and social norms. Profanity and obscenities become a rhythmic soundscape to shameful movements and taboo topics. This dance is evidence that offensive ideas can be used effectively to question “What should we censor, if anything?” Through a mixed media approach, this work draws in the audience with fun facts, news castings and dramatized scenes to accommodate the dance. Tension can arise whenever tackling complex and convoluted topics. *CensorSh*** allows the viewers to reconcile their preconceived notions on language and nudity in a playful way.

SUN, OCT 13, 5PM

In A Lonely Place

Written & Directed by Lo Canale & Livv DiMattio

Two teens develop a surprising bond after meeting on a message board - a safe place for people struggling with suicidal thoughts. Convinced they have nothing to live for, they find a growing friendship and become pen pals, writing each other whenever possible and finding it harder and harder - with each letter they write and receive - to let go.



PLAY

MUSICAL

SOLO SHOW

DANCE

TICKETS \$10 – \$20 | (800)838-3006 | NEWWORKSERIES.COM

SUN, OCT 13, 5PM

The Awards go to

Written by Matt Heftler

Directed by Chris Giordano

Jason was 21 when he won an Emmy Award for his work on the children's show, Captain Cauliflower. Twenty years later, he sees this accomplishment as the highlight of his career, but it's been downhill ever since. When a handsome stranger offers to purchase his award, Jason is uncertain. Does he keep an object that represents his success, or sell it and use the money for a once-in-a-lifetime trip? Depressed, confused, and hesitant, he receives guidance from the one person he least expects. His decision will have an impact on this memory of his past, his thoughts of his present, and his vision of his future.

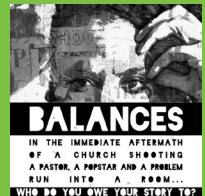


SUN, OCT 13, 7PM

Balances

Written by Janice Lagata

In the immediate aftermath of a church shooting, a pastor, a popstar, and a problem run into a room...



SUN, OCT 13, 9PM

Robert Will Show You the Door (*Tales of Being Fired*)

Written & Performed by Susan Jeremy

On her journey for show biz success Susan has had to endure many jobs, from her first job at a fast food fish joint in Long Island to a cigarette girl in Los Angeles to an usher at Radio City Music Hall. With each job she learned what she could and could not tolerate. She also learned that she does not fit in the box even though she really tried to. This show is about finding her truth: she is fire-able and allergic to polyester uniforms.



PLAY

MUSICAL

SOLO SHOW

DANCE

TICKETS \$10 - \$20 | (800)838-3006 | NEWWORKSERIES.COM

MON, OCT 14, 7PM

The Rewrite

Written by Lynda Crawford

Directed by Albert Insinnia

Performed by Carolyn Groves,* Albert Insinnia* & Byron O'Hanlon

It's the afterlife and Medea confronts Euripides, asking for a rewrite of her story. With a penchant for murder, she's not one to take no for an answer.



MON, OCT 14, 7PM

Wander Woman

Written by Bambi Everson

Directed by Everson/Coleman

Much to everyone's dismay, Jeff's ex-wife keeps turning up at their old apartment, while walking in her sleep on medication. The families attempt to get to the root of her problem.



MON, OCT 14, 9PM

The Rebound

Written by Annalise Cain

Directed by Sarah Cook

Assistant Direction by Kristina Melsheimer

Performed by Charlie Hurtt, Skye Pagon, Jaryn Stewart & Robert Thackery

The Rebound is a darkly comedic response to the classic American sitcom for the #MeToo era. Hal is getting over a break-up. His best friend Eli decides he needs a date. Bev is in a romantic rut. Her best friend Kaycee thinks she needs to get laid. The four set out for the Double Date Extravaganza of the Century, and absolutely nothing goes according to plan.

*Content Warning: This play depicts an act of sexual assault.



TUE, OCT 15, 7PM

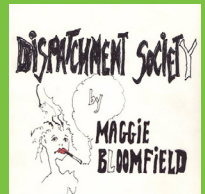
The Dispatchment Society

Written by Maggie Bloomfield

Directed by Rosemary Cline & Maggie Bloomfield

Performed by Jane Lowe Baldwin, Rebecca Edana, Rainer Pasca & Matthew O'Connor

A dark comedy about a fictional suicide-assist organization that turns around on itself, bringing three characters - a young misguided felon, a potential young woman client, and the organization's deeply cynical and embittered receptionist - back from the ledge. In the process, human connections are explored and transformed (maybe).



TUE, OCT 15, 7PM

Use Your Words!

Written & Created by Karen Eleanor Wight

Directed by Melissa Attebery

Performed by Karen Eleanor Wight

With Special Guest Vanessa Shealy

In five wordless scenes, *Use Your Words!* explores the joys and comic frustrations of first-time motherhood.



TUE, OCT 15, 9PM

Don't Say I'm Not Real

Written & Directed by Cayla Berejikian

A man's thoughts accompany him through the stages of death, where he must face his demons and grieve the loss of himself.



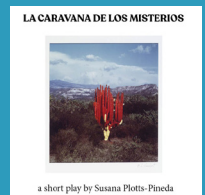
WED, OCT 16, 7PM

La Caravana de los Misterios

Written, Directed & Performed by Susana Plotts-Pineda

This show draws from Mexican folk art and the poetic landscape of Latin American magic realism. Within the frame of a life-sized shadow box, the piece uses the Mexican sensibility of the miniature to reconstruct a history of American intervention during the war on drugs and trace its impact on the current situation at the border.

Transcripts of official documents are interwoven with an array of monologues as we visit three instances of extreme violence in Honduras, Guatemala, and Mexico and attempt to find the links between them. A beauty queen, a bride, and an art auctioneer emerge to tell stories of place and displacement guiding us through the lush continent, its painful histories, and its verdant resilience.



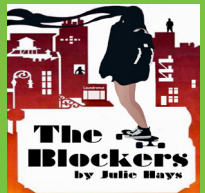
WED, OCT 16, 7PM

THE BLOCKERS

Written by Julie Hays

Directed by Tom Gold

Delia, 40, has lived in New York City in the same apartment on the same block since she was twenty-one. Delia is a "Blocker," one of those rare New Yorkers with cheap apartments who never moves. When Delia is faced with a life-altering decision, her life becomes intertwined with her fellow Blockers in unexpected ways.



WED, OCT 16, 9PM

Model Citizens

Written by Robert Lee Poole III & Haley Poole

Directed by Tabatha Gayle

San Francisco 1995. Polished Alyssa and her radical sister Haley challenge each other and the status quo over the course of their prep school Model United Nations Conference.

Chaos ensues as assassinations, kidnapping, warfare, and political espionage jeopardize the hierarchy ruled by the delegate to the United States and his “allied power bro squad,” forcing the sisters and the student body to reconsider what it means to be a Model Citizen.



THU, OCT 17, 7PM

THE CLUB

Written by Pamela Weiler Grayson

Directed by Christine Cirker

Performed by Nate Rollins, Phoebe Dunn, Lori Hammel,* Steve Hauck,* Farrah Crane, Mahayla Laurence, Kal Mansoor,* Anita Rosner & Lindsay Brill*

In this dark comedy, how far will a formerly successful, middle-aged white cis male playwright go to be considered a “fresh, new voice”?



THU, OCT 17, 9PM

The Poet's Play

Written by Rebecca Branscom

Illustration by Willy Pogany

The Poet's Play is an uncommon love story that begins with its heroine in full mourning over the tragic drowning of her oldest and closest brother. Her story reveals what can happen when love pursues us when we least expect it and how faithful fortitude through the toil of life's circumstances can produce adventures beyond comprehension. Inspired by the life and poetry of Elizabeth Barrett Browning, this play is a celebration of divine interruptions, unexpected restorations, poetry, and of course, the unbridled power of love.



PLAY

MUSICAL

SOLO SHOW

DANCE

TICKETS \$10 – \$20 | (800)838-3006 | NEWWORKSERIES.COM

FRI, OCT 18, 7PM

AFTER ALL...Five Short Plays by Donald Loftus

Written & Directed by Donald Loftus

Five short plays dealing with the development of relationships between human beings.



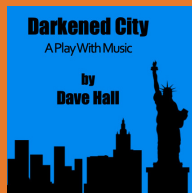
FRI, OCT 18, 9PM

Darkened City

Written by Dave Hall

Directed by Jonathan Cerullo

A group of New Yorkers are brought together, then torn apart by current events. Set a few years before the 2016 elections and a few years after, and against the backdrop of Black Lives Matter, Stop & Frisk, and mass surveillance, the characters' stories are set to a pulsing, percussive score by playwright and composer Dave Hall.



SAT, OCT 19, 7PM

Sentimental Journey

Written by Paul Adams

Directed by Melissa Attebery

Music by Matt Casarino & Jill Knapp

Performed by Lué McWilliams*

Sentimental Journey is a one-woman show about Doris Day and her life, both on screen and off. Share some of her most important moments, both joyful and tragic, and get a more intimate view of this American icon.



SAT, OCT 19, 7PM

Wavelength

Choreographed & Danced by Emily Chamberlin

Composition & Bass by Marlon Martinez

Wavelength is a musical exploration inspired by Marlon Martinez' score *Open Gate*. This duet explores dynamics of leadership, control and trust within relationships. Our duet depicts two people seeking to find a common language through the intimate connection between music and dance.



SAT, OCT 19, 9PM

Scandusical

Book, Lyrics & Music by Janice Lagata
Music Director: Annabelle Revak

Welcome to D.C., playground of politicians and stomping ground of Olivia Pope, an elite fixer. With the help of her associates and frenemies in the White House, she's managing almost as many problems as she's causing. It's Scandal. It's a musical. And it's good. Consider it handled.



SUN, OCT 20, 2PM

Madame Curie the Musical

Written & Composed by David Kurkowski
Directed by Cate Cammarata

This full-length musical tells the story of one of the greatest scientists in history. Her life goal was to study science, but to do so she had to overcome enormous obstacles, including discrimination based on gender and nationality.

Her story is one of triumph. She discovered two elements and won not one, but two Nobel Prizes, becoming the first woman in history to do so.

Madame Curie the Musical will inspire and enthrall audiences of all ages because the challenges she overcame echo in our own time. You'll remember the story and hum the gorgeous melodies for days afterward.



SUN, OCT 20, 5PM

Freeze Response

Written by John R. Osborn & Katie Osborn
Directed by Katie Osborn
Lighting & Multi-Media Design by Jonathan Sparks
Performed by Katie Osborn, Chris Ellis & more

Based on found text in Peter Levine's breakthrough book on healing trauma, "Waking The Tiger," this multi-form piece uses music, visuals, sound, movement and the subtlety of language itself to explore how the rational brains of humans can interfere with the natural need to discharge our activated threat responses. Inability to discharge these activations result in PTSD. We can learn from the animal kingdom and their instinctive responses to danger. As Levine points out, "the foundation for human physiology evolved with the earliest creatures that crawled out of the primordial ooze."



PLAY

MUSICAL

SOLO SHOW

DANCE

TICKETS \$10 - \$20 | (800)838-3006 | NEWWORKSERIES.COM

SUN, OCT 20, 7PM

Ban

Choreographed by Erica Isakower

Sound: *Fear Itself* by Taylor Mac *Gun Control* by Jim Jefferies

Sound Editing by Erica Isakower

Danced by Amanda Alves, Erica Isakower & Anna Paterson

*Trigger warning: Gun Violence and Explicit Language

This dance piece takes a satirical approach on the gun crisis in America, and debunks common excuses against gun bans. We've had enough. A portion of our box office proceeds will be going to everytown.org, a national non-profit organization fighting to end gun violence and stand up to gun lobbyists. Please go to whoismyrepresentative.org to be informed and connected with your representatives. Contact your representatives and demand action for common-sense gun control.



SUN, OCT 20, 7PM

Grand Prix du Festival

Written & Directed by Phil Reissman

A reclusive American director gives his first interview in 23 years to a French film critic. But the critic has a hidden agenda.



SUN, OCT 20, 7PM

Perception

Choreographed by Jill Molinaro

Danced by Kel Vallery & Kaleen Butterfield

Perception is about how one views oneself and how the world around them views them differently. Sometimes it only takes one person to view you differently to change a perception.



SUN, OCT 20, 7PM

SHAPESHIFTER – Sketches of the Human Experience

Directed by Shachi Phene

Choreographed by Shachi Phene, Vishney Ambalavanar, Proma Khosla

Performers: Manisha Agrawal, Vishney Ambalavanar, Rhea Ghosh, Proma Khosla, Anjali Mehta, Samiksha Nayak, Bindi Patel, Shachi Phene, Maalya Ramachandran, Shruti Sheladia, Priyanka Trivedi & Supriya Vaidya

SHAPESHIFTER is an exploration of the various connections that form multi-layered human experience - friendship and community, romance, history and tradition, the Earth, the spiritual world, and the self. Presented in the medium of Indo-Contemporary dance, the choreography uses nuanced rhythm-play and expressive storytelling to bring each piece to life.



SUN, OCT 20, 9PM

Fugue

Written by Jonathan Yukich

Directed by Noah Tuleja

Three characters - known only as A, B, and C - come together over the false promise of a free yoga class. As the figures reveal more of themselves, the mystery of who, or what, they are begins to unravel. Funny, fast, and wholly theatrical, the play is structured as a musical fugue, exploring the act of artistic creation and its parallels to real life.



SUN, OCT 20, 9PM

Habitual Longing

Choreographed & Performed by Danielle Alvarez

Music Composition by Madeleine Cocolas

On the precipice of her most recent desire, she is transported into memories of all her past suitors that have brought her to this... lost and craving much more. Hyper surreal physical feelings catapult her into the woods by the side of her car, not by disrepair but chosen abandonment. Little does she know what is waiting for her on the other side is something far more desirable.



SUN, OCT 20, 9PM

"Kitsch-In" by Sweetie Pie Productions

Choreography & Performance by Erika Randall & Anna Sapozhnikov

Erika Randall and Anna Sapozhnikov make up the duet collective, Sweetie Pie Productions. Their work shares their new worlds of hilarity and misery. The work together is funny, tender, wry and sometimes vicious—towards themselves, each other, the ones they birthed, and those who birthed them. They are eager to face the truths of "Mom-ing" within their art.



*** Appears courtesy of Actors' Equity Association.**



PLAY

MUSICAL

SOLO SHOW

DANCE

TICKETS \$10 - \$20 | (800)838-3006 | NEWWORKSERIES.COM

WHO WE ARE

NWS CURATORS

Paul Adams
Andrea Alton
Vanessa Shealy
Scott Klavan

EAT BOARD OF DIRECTORS

Chair

Mark Barres

Vice Chair

Adam Weinstock

Treasurer

Roger Cooper

Secretary

James C. P. Berry

Founder

Paul Adams

Board Member

Pamela Weiler Grayson
Cheryl Howard

EAT STAFF

Artistic Director

Paul Adams

Managing Director

Steven De Luca

Associate Artistic Director

Derek Jamison

Associate Artistic Director

Melissa Attebery

Social Media Director

Andrea Alton

Playwrights Co. Manager

Kathleen Warnock

Actors Company Manager

Erin Hadley

Stage Manager

Elizabeth Bell

Assistant Stage Manager

Adam Carrigan

Website

Micah Logsdon / Milograph

Database

Elizabeth Bell

Brown Paper Ticket Setup

Elizabeth Bell

Yahoo Group

Jason Hare

Programs

Bargain Printing

Jessica Will

Emerging Artists gratefully acknowledges the following foundations for their support:

Department of Cultural Affairs
Century Arts Foundation
NYSCA

OUR SUPPORTERS

1ST CHAIRS

Jane Altman

Sarah Aziz

Matt Boethin

Donna Bungo

Matt Casarino

Blanche Cholet

Brett Douglas

Erin & Mark Ginocchio

Joe Godfrey

Ashley Green

Tom & Sabrina Greenman

Deb Guston & Pat Nixon

Jason & Jessica Hare

Larry Harris

Janice Heinemann

Peter Herrick

Sarah Hollister

Rebecca Hoodwin

Scott Katzman

Kerri Kochanski

Kurt Kingsley

Mark Lambeck

Tim McMath

Lue McWilliams

Hershey Miller

Richard Ploetz

Scott Raker

Ellen Reilly

Jonathan Reuning

Yvonne Roen

Maya Rosewood

Jack Rushen

Ronald & Martha Seib

Nicola Sheara

Sally Sockwell

Jon Spano

Matt Stapleton

Staci Swedeen

Kate Thaw

Kathleen Warnock

Marie Wallace

Chris Widney

DONORS

Robin Abrahms
Bruce & Jan Adams
Dee Adams
Heather Adams
Paul Adams
Anne & Todd Alkema
Francisco Almada
Jane Altman
Judy Altman
Wynne Anders
Deb Armelino
Janet Armelino
Melissa Attebery
Gary Bagley
Mark Barres
Chantal Bayard-Fabri
Joe Beck
Katherine & Robert Beede
Norman Beim
Elizabeth Bell
Monica Bernheim & Daniel Gelb
Jennifer Bernstein
Bruce Bernstein
James C.P. Berry
Chuck Blasius
Laura Fois Bosley
Tania Bucca
Joseph & Theresa Callari
James Cameron
Rita & Franklyn Caruso
Matt Casarino
Marc Castle
Eric Chase
G. Colon
Roger Cooper
Antionietta Corvini
Cynthia Cowen
Gary Cowling
Lawrence Cowling
Lynda Crawford
Barbara Crook
Curtis Smith & Jay Deratany
Roland Dib
Beatrice Disman
Donald Textor Family
Foundation
Deborah & Daniel Duane
Patty & Rich Fitzgerald
Marilyn Flaherty

Elizabeth Flores
Bea Fraitag
Michele Fulves
Marian Gibbs
Erin & Mark Ginocchio
Joe Godfrey
Mert & Bill Gohman
Suzanne & Joshua Gold
Stanley Gotlin
Ginger Grace & David
Rosenstock
Pamela Weiler Grayson
A.R. Gurney
Deb Guston
David Hansen
Renee & Herman Harris
William Harris
Steve Hauck
Marietta Heinlein
Holly Hepp-Galvan
Ricardo Hinkle
Harold Hoodwin
Melody Howard & Jay Ritt
Terry Hueneke
Derek Jamison/Tim Leavitt
Eileen Judell
Ann Kahn
Harriet & Sheldon Kaplan
Scott Katzman
Rasa Allan Kazlas
Diana Lalich
Dennis Lalli
Mark Lambeck
Paul Landsbergis
Peter & Gail Levine
Christine Li
Shirley & John Longshore
Joy & Rory MacLeod
Janice Mann
Cornelia Marthon
Tony Marzani
Paulette Mattson
Ronald Mayer
Frank & Peggy McConnell
Steven McElroy
Ann McKendry
James McLaughlin
Lue McWilliams
Vivian Meisner

Susan Monserud
Douglas Moss
Ruth Norton
James Nugent
Russell Ochocki
Mary Lou Ortiz
Marc Palmieri
Martin & Elaine Pasternack
Patricia M. Paz
Carole Pesner
Charissa Bertels Pingent
Carol & Richard Ploetz
Sanford Plotkin
Paige Price
Mary Rausch & David
Peebles
Rachel Reese
Donna & Walter Reuning
Jonathan Reuning
Charles Rice-Gonzalez
Margaret E. Ritchie
Julien Rose
Maya Rosewood
Marcia Sander
Hana Roth Seavey
Jess Shatkin
Adrienne Shepherd
Edward Sherman
Steve Sherman
Rochelle Sinclair
Louis & Eleanor Skydell
Ted Snowdon
Jon Spano
Arlene Katz Spitzer
Mary Strauss
Steve Strauss
Ian & Kim Streicher
Lucas Syed
Kate Thaw
Marie Wallace
Kathleen Warnock/Donna
Bungo
Arnold Wehofer
Andrew Weiler
Adam Weinstock
Karen Weiss
Sean Welch
Peter Wood
Therese Adams Young
Chris Widney

IF YOU'D LIKE TO DONATE TO EMERGING ARTISTS THEATRE

HERE'S HOW:

ONLINE:

EmergingArtistsTheatre.org

CHECK BY MAIL:

Emerging Artists Theatre

15 West 28th St., 3rd floor

New York, NY 10001

ACTORS' EQUITY ASSOCIATION



("AEA" or "Equity"), founded in 1913, is the labor union that represents more than 49,000 Actors and Stage Managers in the United States. Equity seeks to advance, promote and foster the art of live theatre as an essential component of our society. Equity negotiates wages and working conditions and provides a wide range of benefits, including health and pension plans, for its members. Actors' Equity is a member of the AFL-CIO, and is affiliated with FIA, an international organization of performing arts unions. The Equity Emblem is our mark of excellence. www.actorsequity.org

Emerging Artists Theatre gratefully acknowledges

THE CENTURY ARTS FOUNDATION

for making the New Work Series possible

We wish to express our gratitude to the
Performers' Unions:

ACTORS' EQUITY ASSOCIATION

AMERICAN GUILD OF MUSICAL ARTISTS

AMERICAN GUILD OF VARIETY ARTISTS

SAG-AFTRA

through Theatre Authority, Inc. for their cooperation
in permitting the Artists to appear on this program.

This program is supported, in part, by public funds from the New York City Department of Cultural Affairs, in partnership with the City Council.





EMERGING ARTISTS
T H E A T R E



EmergingArtistsTheatre



#NewWorkSeries #EmergingArtistsTheatre



@EATisTweeting